

Optimal Fuel Quality

- More Power, Less Smoke & Soot
- Cleans Injectors, Filters & Tanks
- Saves Fuel & Extends Engine Life
- Lowers Downtime & Operating Cost
- Peak Engine Performance & Reliability



Improved Stability, Filtration & Combustion

Reduced Emissions & Soot

Clean Fuel - Cleaner Air



MODEL*	200	400	500	1000	1500	3000
Port Size	1/4"	3/8" 1/2"		1/2" 3/4"		1"
Max flow rate ** (gallons per hour)	25	110		350		800
Weight lbs	1	2		4		8
HP range (up to)	200	500		1500		3000

*Larger capacity equipment for higher flow rates is available
 **Max recommended flow capacity for engine applications
 For recirculating systems double the indicated flow rate
 Anodized Marine Grade corrosion resistant 6061 Aluminum

Made in the U.S.A.

Lifetime Warranty

ALGAE-X International
 5400-1 Division Drive
 Fort Myers, FL 33905

[1] 877-425-4239
 [1] 239-690-9589
www.algae-x.net



Distributed By:

ALGAE-X[®]
 Fuel Conditioning

ALGAE-X[®]
 Fuel Conditioning

Optimization, Maintenance
 & Management Systems

FUEL OPTIMIZATION, MAINTENANCE & MANAGEMENT TECHNOLOGY

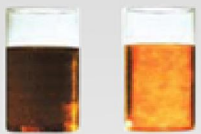
Fuel Quality Counts

Diesel Engines require optimal Fuel Quality for Peak Performance and Reliability. Fuel, however, is inherently unstable. Fuel breakdown is unavoidable, and accelerated by heat, storage, pressure, condensation, and microbial contamination.

What it means is that your engines are struggling to burn a less than optimal energy source. That translates into poor engine performance and economy, plus higher repair rates. Several studies even suggest that the overwhelming cause of most engine failures are now fuel related, especially with today's electronic injection systems.

But you don't have to suffer the downtime, lost performance and maintenance costs poor Fuel Quality brings. Algae-X® has spent over a decade of research and patent work dedicated to Reconditioning and Optimizing Fuels. Today, your Engines can reach new heights of Performance and Reliability by implementing Fuel Management technologies from Algae-X® International.

without ALGAE-X with ALGAE-X



Symptoms

- Dark or Hazy Fuel
- Clogged Filters
- Tank Sludge
- Smoke & Soot
- Loss of Power
- Corrosion
- Failed Injectors
- Engine Shutdown



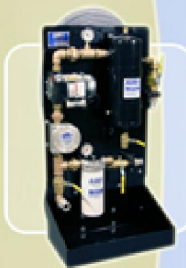
Inline Fuel Conditioners

The Inline Fuel Conditioner is Algae-X®'s core technology and actually reverses the fuel deterioration process, turning sludge back into quality, burnable diesel. Fuel Conditioners are installed on-board on Trucks, Boats, Trains, Power Plants and more. The result is optimal Fuel Quality providing improved combustion, better fuel economy, lower maintenance and lower emissions. And a phenomenal return-on-investment.



Fuel Catalyst

AFC-705 Fuel Catalyst is a multi-spectrum product too advanced to be called just an additive. Added to fuel, it prevents and even burns off hard carbon deposits, rejuvenating engines while raising fuel economy, dissolving contaminants and adding lubricity. Super-concentrated AFC-705 excels as an every-day, money-saving catalyst for not only Diesel, but Bio-Diesel, Gasoline, and Ethanol applications too.



Mobile Tank Cleaning Systems

Demanding Professionals know that Algae-X® Tank Cleaning Systems provide visibly better results. That's because an Algae-X® Tank Cleaning system is Reconditioning the Fuel in addition to being a carefully engineered Filtration and Water Separation solution. And the Mobile Tank Cleaning line offers systems that can travel to any site to keep equipment running at Peak Performance.



Total Fuel Management Systems

No matter the environment, Power Generation, Marine, or Heavy Equipment, Algae-X® has engineered a Fuel Management system to meet your need. Providing advanced Fuel Conditioning, Water Separation, Filtration, and fully Automated operation with programmable controls, Algae-X® systems are all designed to assure reliable Engine/Generator performance when you need it most. If your world just can't afford to stop, take a closer look at Algae-X®.



Custom Engineering

Fuel Management environments are full of variables. The flexible design of Algae-X® solutions can be adapted to meet your unique requirements. Call an Algae-X® Fuel Management expert today for a free consultation to achieve Optimal Fuel Quality for reliable Diesel operations in your world.