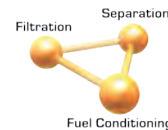


LG-X

In-Line Fuel Conditioner



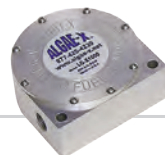
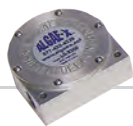
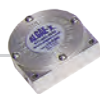
LG-X In-Line Fuel Conditioners immediately extend filter life and clean the total fuel system by returning clean, conditioned fuel to the tank whenever the engines or pumps are running. They protect the injection system and extend engine life. LG-X Fuel Conditioners guarantee **Optimal Fuel Quality at All Times**.



LG-X In-line Fuel Conditioners:

- Improve Fuel Stability, Filtration and Combustion
- Clean Fuel Injection Systems, Filters and Tanks
- Lower Harmful Emissions and Fuel Consumption
- Eliminate and Prevent Carbon Deposits
- Reduce Maintenance & Downtime
- Increase Safety and Reliability
- Lower Operating Costs

Diesel, biofuels, kerosene, gasoline, hydraulic fluid and oil are inherently unstable organic hydrocarbon fluids that naturally break down. The resulting sediments, acids and tank sludge clog filter elements and corrode injection systems.



LG-X Model	200	500	1500	3000	4000/5000
Port Size (NPT/BSP)	1/4"	1/2"	3/4"	1"	1-1/2 / 2"
Max Flow Rate	1-25 GPH (3.8-95lph)	20-110 GPH (76-416lph)	50-350 GPH (189-1325lph)	200-800 GPH (757-3028lph)	1500 / 2500 GPH (5678lph / 9464lph)
Weight	1lb (.45kg)	2lb (.9kg)	3.5lb (1.6kg)	7.5lb (3.4kg)	27 / 35lb (12kg / 16kg)
HP Range	200	500	1500	3000	3000 (and up)

Lifetime Warranty

Most Engine Failures Start in the Tank

Diesel engines take more fuel out of the tank than is needed for combustion. Fuel is continuously cycles from the tank through filtration and separation to the engine, returning most of the fuel back to the tank. In 24/7 applications, one would think continuously moving fuel would result in spot-less tanks, but this is not the case.

Fuel filters should last thousands of hours. However, frequent filter changes, tank cleaning and replacing fuel have

become commonplace periodic maintenance practices instead of being serious warning signs for potentially expensive downtime, power failures and liabilities.

AXI Fuel Conditioners stabilize and condition fuels by reducing the size and mass of clusters of fuel molecules. In combination with primary filter water separators, fuel conditioners prevent fuel degradation and microbial contamination. They optimize fuel quality, keep tanks clean and protect engines.



+1-239-690-9589
1-877-425-4239 Toll Free
www.AXIFuelConditioning.com

Wherever fuel is being used or stored